



Market Announcements Office
Australian Securities Exchange
Level 4, 20 Bridge Street
Sydney NSW 2000

7 August 2013

Clermont Copper Project Update Farm-In with Antofagasta

A Rotary Air Blast (RAB) drilling program is currently being conducted over EPM 17968, in central Queensland, targeting an extensive area between the Hillview East and Consols prospects, a distance of six kilometres within the Rosevale Porphyry Corridor (RPC) – see location on Figure 1. The geology in this zone is blind under cover and lacks any mapping or surface geochemistry, but importantly represents half the strike length of the RPC.

This drilling program, of RAB blade to refusal, sampling and logging of the weathered basement rocks, is designed to locate any porphyry style mineralisation/alteration within the central underexplored area of the RPC. The program is expected to contain approximately 250 shallow drill holes, with an average depth to basement of 4.5m. Following completion of drilling (around 20 August 2013), basement samples will be sent for analyses for gold and base metals. Results from this program are expected to aid in the interpretation of this largely unexposed portion of the highly prospective RPC, 15km west of Clermont. The overall intention of the work is to define further diamond drilling targets.

A 500m deep diamond drill hole from surface is scheduled to commence in September 2013 targeting a very high Induced Polarisation anomaly situated between the Gollan and West Copperfield prospects in the northern portion of the RPC.

For further information:

Tony Fawdon

Executive Chairman/CEO

Ph: +61 7 3832 5666

Competent Person Statement

The information in this report, insofar as it relates to Exploration Results and Mineral Resources is based on information compiled by company personnel under the supervision of Mr David Jelley, who is a full time employee of Diatreme Resources Limited and a Member of the Australasian Institute of Mining and Metallurgy. Mr Jelley has sufficient experience which is relevant to the style of mineralisation and type of deposit under consideration and to the activity which he has undertaken to qualify as a Competent Person as defined in the 2004 Edition of the 'Australasian Code for Reporting of Exploration Results, Mineral Resources and Ore Reserves'. Mr Jelley consents to the inclusion in the report of the matters based on the information in the form and context in which it appears.

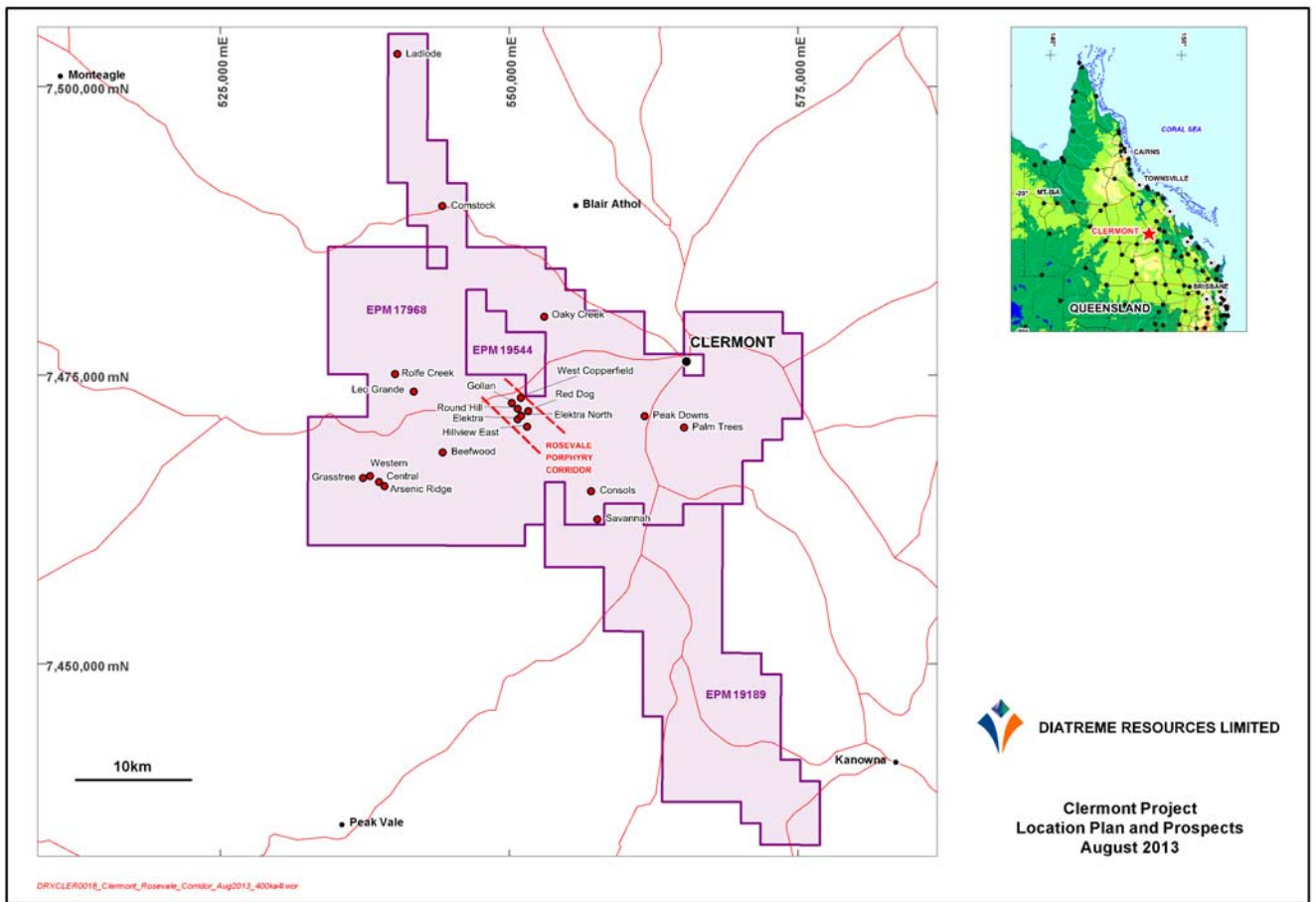


Figure 1: Clermont Project Location Plan showing prospects